



RECP #: 752810

RECORDED 5/8/2019 AT 1:19 PM BK# 2620 PG# 1852  
Debra K. Lee, CLERK OF LARAMIE COUNTY, WY PAGE 1 OF 1

# STATE OF WYOMING CORNER RECORD

(In compliance with the CORNER PERPETUATION AND FILING ACT, Wyoming Statutes, 1997 Section 33-29-140, et. seq., and the Rules and Regulations of the Board of Registrations for Professional Engineers and Professional Land Surveyors)

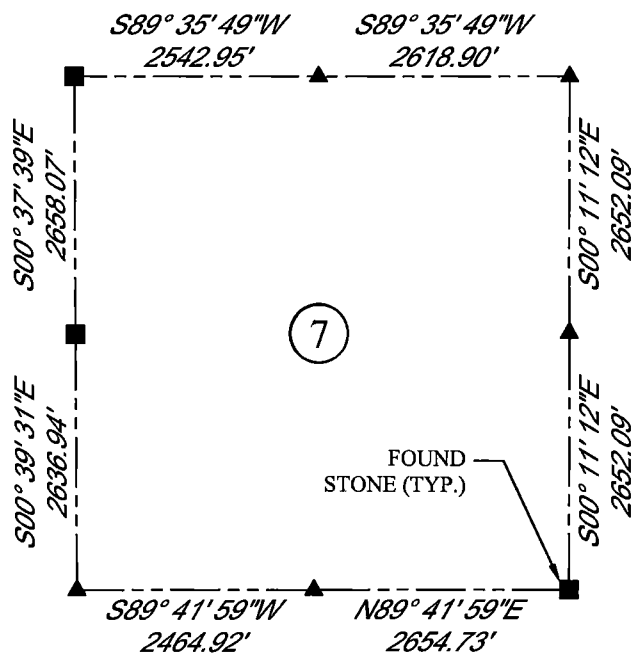
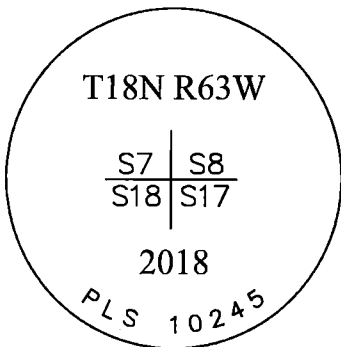
## SOUTH EAST CORNER SECTION 7, T. 18 N., R. 63 W., 6TH P.M., LARAMIE COUNTY, WYOMING

**GLO:** SET A SANDSTONE 18X14X4 10 IN. DEEP. MARKED WITH 4 NOTCHES ON S. SIDE AND 5 NOTCHES ON E. SIDE FOR CORNER TO SECS. 7, 8, 17, 18.

**FOUND:** REMAINS OF SANDSTONE APPROX. 9X7X3, PIECES OF STONE STILL BURIED AND THE STONE WAS STILL IN THE GROUND, NOT SET WITH REMAINS OF OLD FENCE AROUND THE STONE. NO MARKINGS FOUND. SET AN ALUMINUM CAP MARKED AS SHOWN.



SCALE: NONE  
NORTH DETERMINED BY  
G.P.S OBSERVATIONS



### LEGEND:

- FOUND BLM CAP
- ⊙ FOUND USFS CAP
- FOUND STONE
- FOUND PRIVATE MONUMENT
- ◆ CALCULATED POSITION
- ▲ SET MONUMENT (LS10245)
- SECTION LINE

DATE OF FIELD WORK: 09/25/2018 OFFICE REFERENCE: 746049

### CROSS INDEX DIAGRAM

1	2	3	4	5	6	7	8	9	10	11	12	13	14	15	16	17	18	19	20	21	22	23	24	25	
A																									A
B																									B
C	6				5				4					3					2					1	C
D																									D
E																									E
F																									F
G	7				8				9					10					11					12	G
H																									H
J																									J
K																									K
L	18				17				16					15					14					13	L
M																									M
N																									N
O																									O
P	19				20				21					22					23					24	P
Q																									Q
R																									R
S																									S
T	30				29				28					27					26					25	T
U																									U
V																									V
W																									W
X	31				32				33					34					35					36	X
Y																									Y
Z																									Z
	1	2	3	4	5	6	7	8	9	10	11	12	13	14	15	16	17	18	19	20	21	22	23	24	25

WOOD  
2615 AVIATION DRIVE  
SHERIDAN, WY 82801  
PH: 307-675-6400



THIS CORNER RECORD WAS  
PREPARED BY ME OR UNDER  
MY DIRECTION AND  
SUPERVISION,  
SEAL AND SIGNATURE

